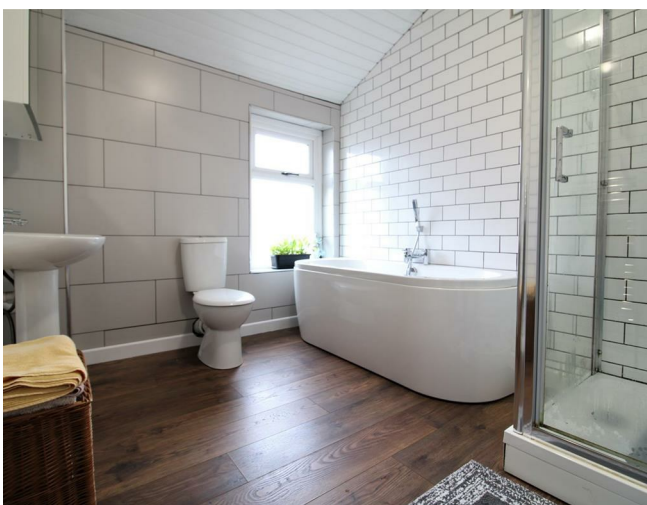


46 Gregson Road, Lancaster, Lancashire, LA1 3DH



£128 Per Week



Head Office: 83 Bowerham Road Lancaster LA1 4AQ
T 01524 548888 E enquiries@mightyhouse.co.uk W www.mightyhouse.co.uk



Mighty House is a trading name of P&PC Surveyors Limited. Registered Office: 70 Daisy Hill, Dewsbury, WF13 1LS. Company no: 06498054

Amazing 2 bedroom student house available for the next academic year!

Well presented spacious two bedroom mid terraced house, within walking distance of the historic city of Lancaster, making this ideal location for Students. Two spacious open plan reception rooms with feature fireplace, modern fitted kitchen, two bedrooms.

Gorgeous four piece bathroom suite, that must be seen to be fully appreciated. Outside offers a generous flagged yard with brick built outbuilding plumbed for washing machine and drier and excellent storage. This is quite an exceptional property and viewings are highly recommended.

The rent does not include bills.

We also offer 'Noposit' instead of a traditional deposit - for all information on this, please see the Noposit page of our website:
<https://mightystudentliving.co.uk/noposit>

Noposit

Some of our properties offer our Noposit option! Noposit is a hassle-free alternative to a traditional deposit, providing an opportunity to secure your house for an initial payment of just £30. Noposit is a non-refundable fee totalling £180 paid over 6 months. Please note that damage to the property is still your responsibility.

Our Noposit students benefit from enhanced contents insurance cover and you will automatically be entered into monthly draws where you can win free rent, vouchers, and more!

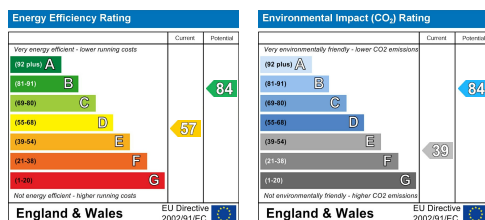
Mighty Card

Our Mighty Card will grant you exclusive discounts for local

businesses: coffee shops, restaurants, beauty shops etc. Visit our Mighty Card page on our website for a list of businesses offering exclusive discounts.

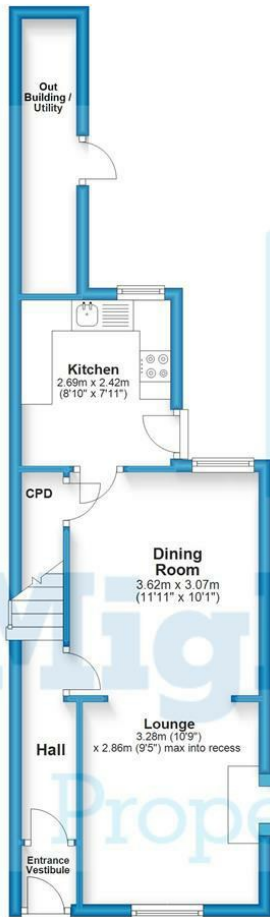
Contents insurance

All our student tenants benefit from contents insurance. Details can be found on the Contents Insurance page on our website.



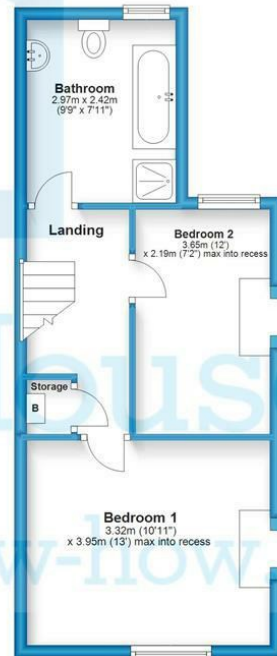
Ground Floor

Approx. 33.7 sq. metres (362.8 sq. feet)



First Floor

Approx. 35.4 sq. metres (380.6 sq. feet)



Total area: approx. 69.1 sq. metres (743.3 sq. feet)

This floor plan is for illustrative purposes only and is not to scale. Where measurements are shown they are approximate and should not be relied on. No liability is accepted in respect to consequential loss arising from the use of this plan.
Plan produced using PlanUp.

Gregson Road, Lancaster